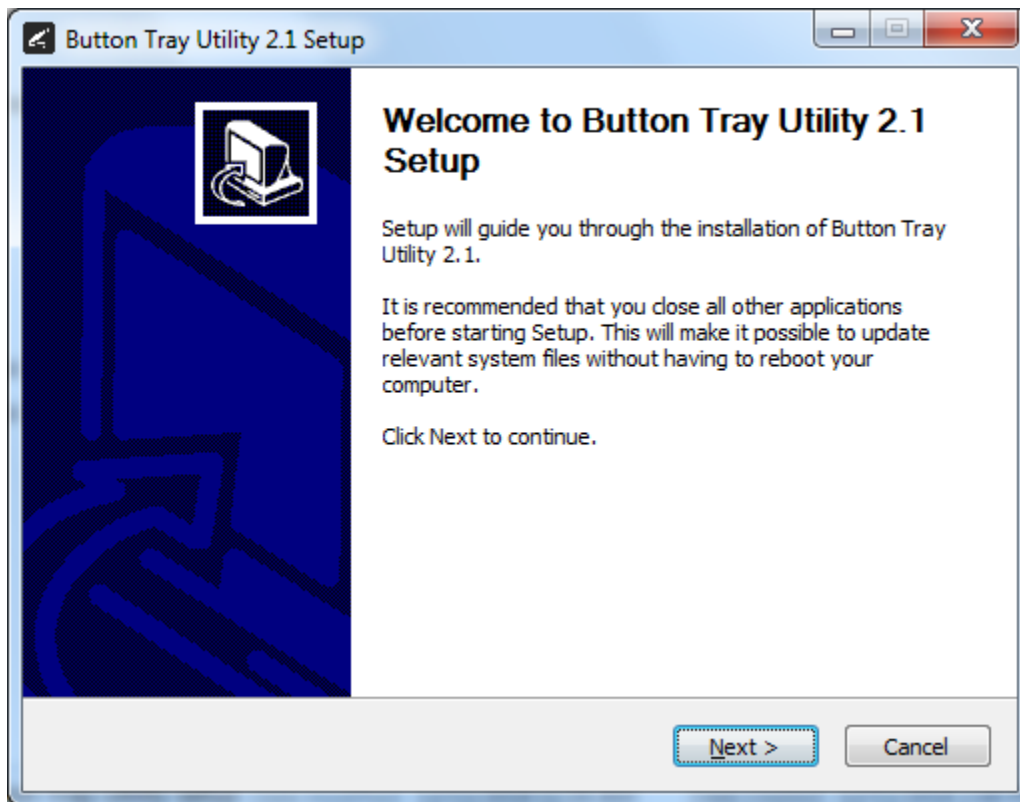
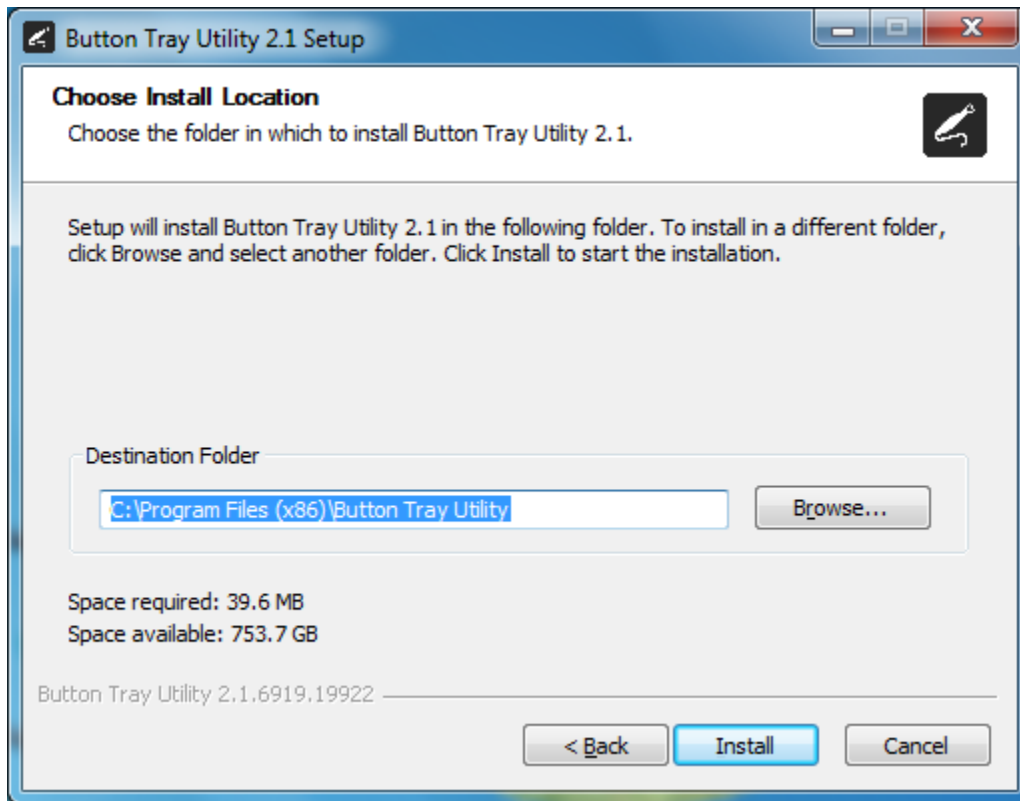


Setup Guide for XDR 3.2 and higher.

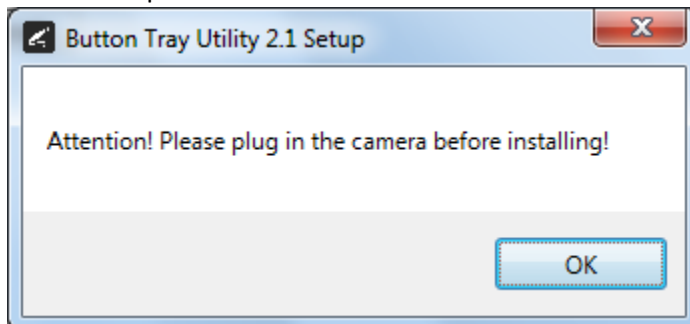
- 1) Install the REALCLOUD HD1 camera button software utility. The installer is located on the REALCLOUD HD1 flash drive in the Button Software folder. Or REALCLOUD Website <http://www.realcloudimaging.com/support/>
Scroll down the Support Page to the Downloads Section. Click the “Capture Button Software” button. This will start downloading the Button-Tray-Utility.zip , once downloaded open the zip file and Install the REALCLOUD HD1 camera button tray utility software.
- 2) Select the Next button on the Welcome screen.



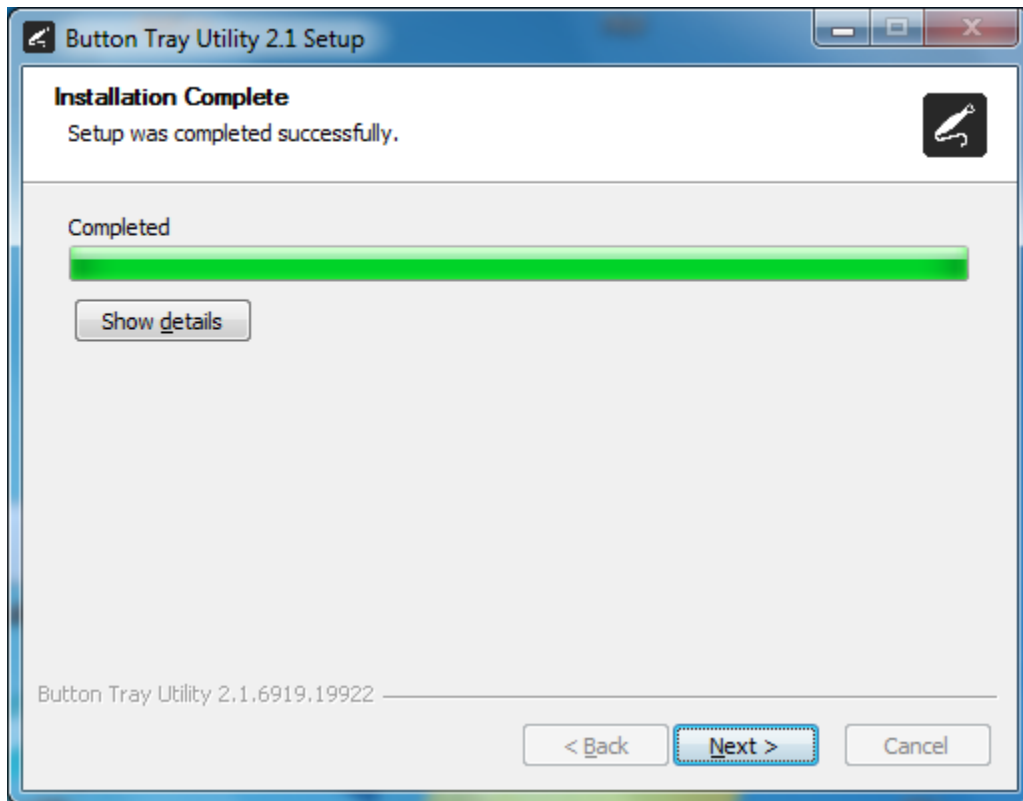
- 3) Select the install destination folder and click on the Install button.



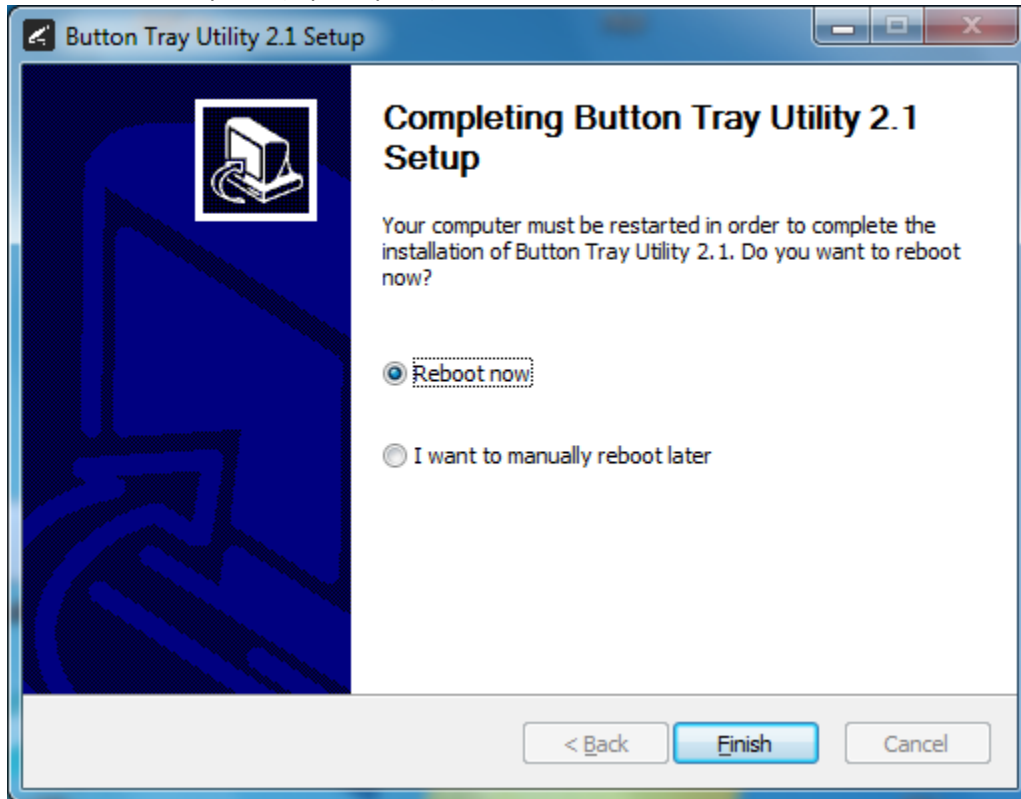
- 4) Plug the REALCLOUD HD1 camera into the computer and click on the OK button to start the installation process.



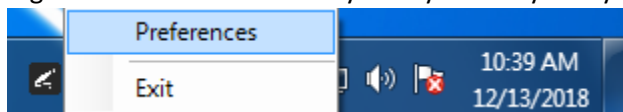
- 5) Click on the Next button to continue.



- 6) Select a reboot option (if prompted) and click on the Finish button.

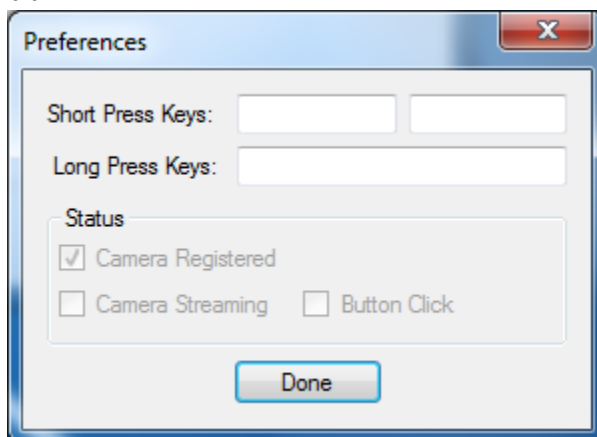


- 7) Right click on the Button Tray Utility icon in your system tray and select Preferences.



- 8) Click in the first text box for Short Press Keys and press the “spacebar” key one time on your keyboard, then click on the Done button.

Note: The second text box for Short Press Keys and the text box for Long Press Keys are left blank.



9) Open the XDR application, select the Settings button.



10) Select the Advances Settings tab, in the Video Capture section select the WDM option and click on the OK (Save) button.

The screenshot shows the 'Advanced Settings' dialog box with the following configuration:

- BRIDGE BY:**
 - By Patient ID
 - By Patient Name
- PROTOCOL:**
 - DataGrabber
 - XDR
 - Mogo
 - Trophy
 - DentaVision
 - EagleSoft (AIM)
 - File Based (SD, PB, DC)
 - PracticeWorks
 - PerfectByte
 - File Based (TB ID)
- VIDEO CAPTURE:**
 - WDM
 - VFW
 - 1 to 1 Display
- ORIENTATION:**
 - Dimple Out
 - Dimple In (Flipped)
 - Intensity Boost
 - AUTO BRIGHT
 - SET GAIN
 - Slider: 0.57
 - Use Default Twain
 - Set Default Twain
 - 0 Deg
 - Set Twain Rotation
- PAN-CEPH:**
 - Twain Type: TWAIN
 - Type: none
 - Find
 - Prog Path: 1
 - X Scale: 1
 - Y Scale: 1
 - Post Images
 - Image Posting Folder: none
 - c: [osdisk]
 - Save Retakes

Buttons: OK (SAVE), CANCEL

- 11) With a patient selected, click on the Fast Image button and select Video to open the video acquisition.



- 12) Select "RCI 1080P HD" as the Device.



- 13) A short/quick camera button press, and release will pause the live video from the RealCloud HD1 camera. A second short/quick camera button press, and release will save the image and will return to live video from the REALCLOUD HD1 camera.