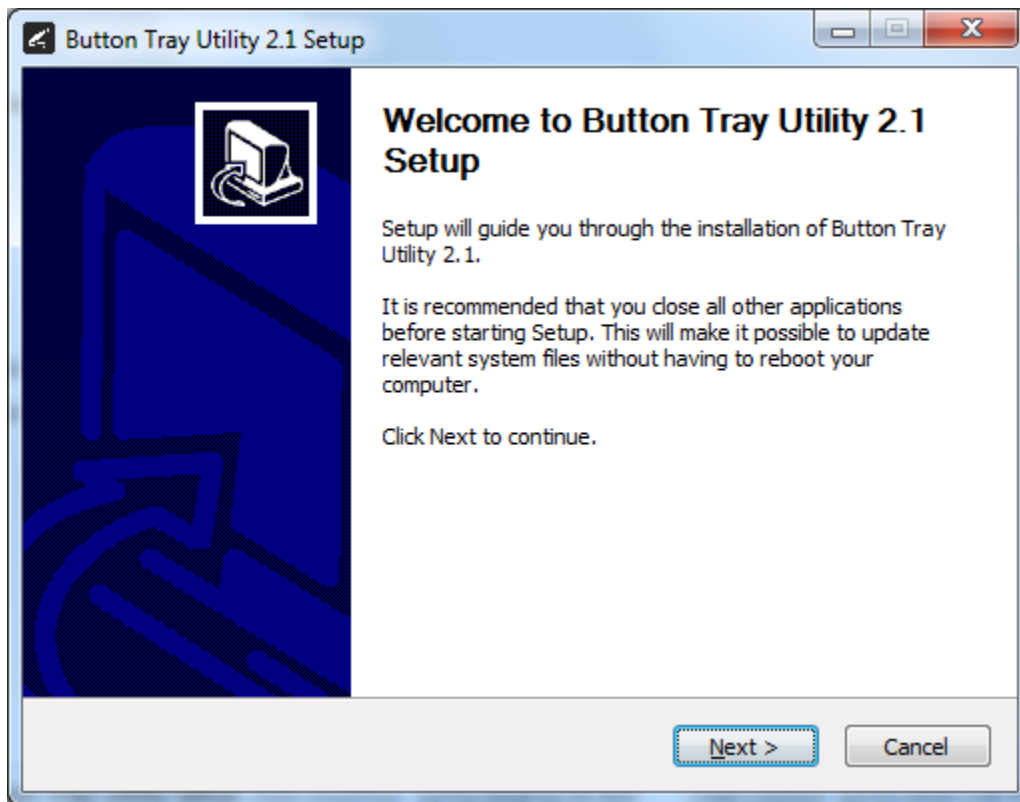
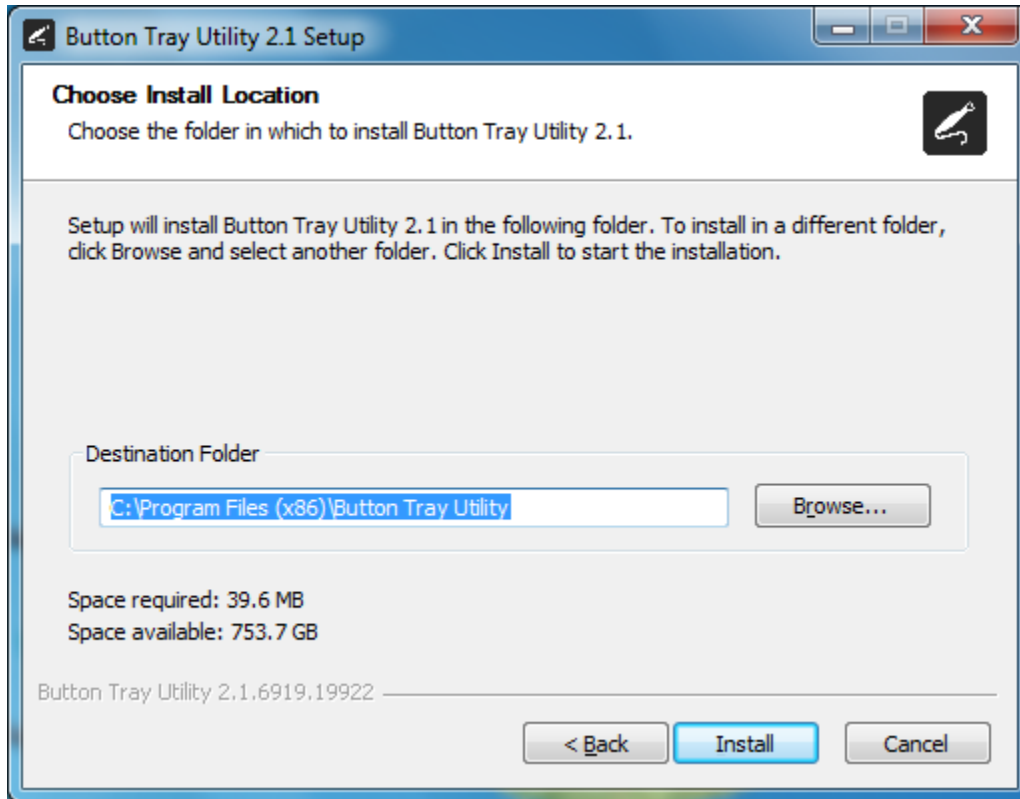


## Setup Guide for VixWin Platinum 3.5 and higher.

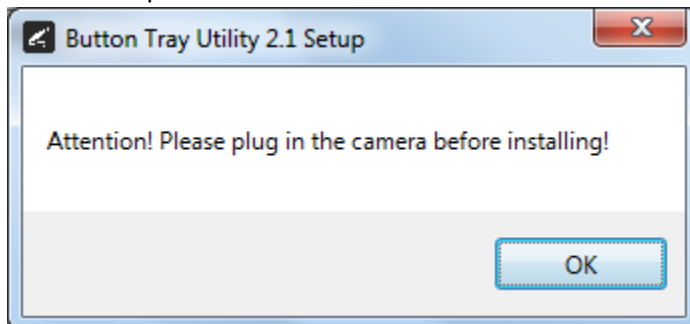
- 1) Install the REALCLOUD HD1 camera button software utility. The installer is located on the REALCLOUD HD1 flash drive in the Button Software folder. Or REALCLOUD Website <http://www.realcloudimaging.com/support/>  
Scroll down the Support Page to the Downloads Section. Click the “Capture Button Software” button. This will start downloading the Button-Tray-Utility.zip , once downloaded open the zip file and Install the REALCLOUD HD1 camera button tray utility software.
- 2) Select the Next button on the Welcome screen.



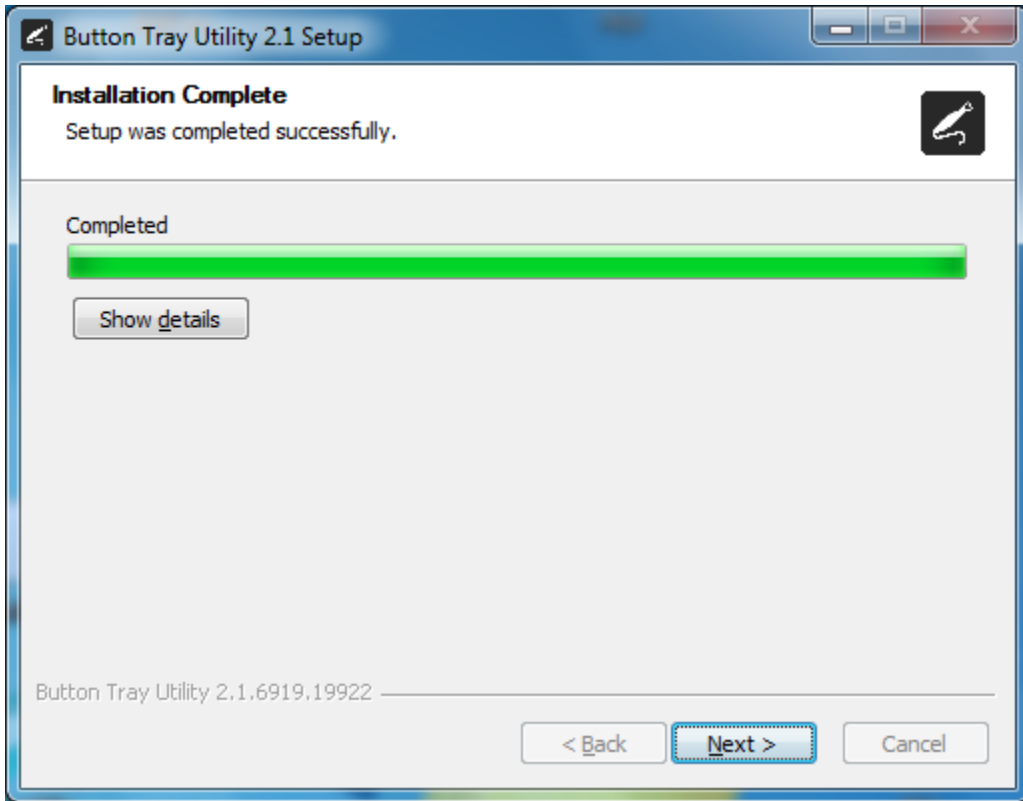
- 3) Select the install destination folder and click on the Install button.



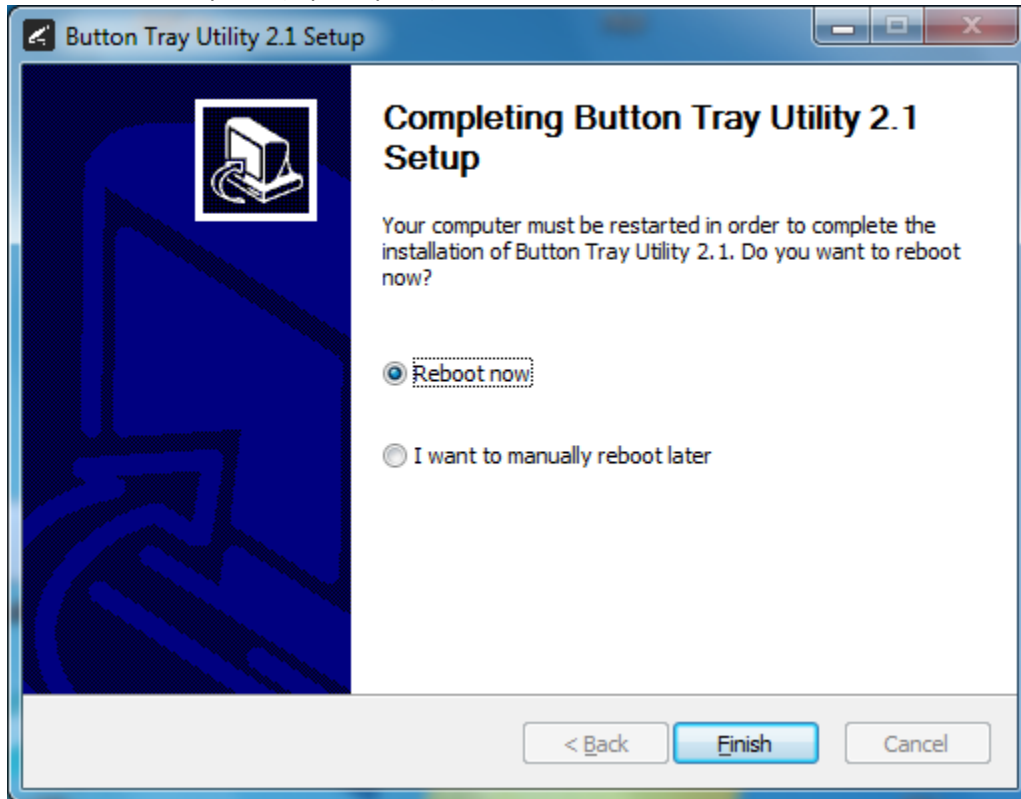
- 4) Plug the REALCLOUD HD1 camera into the computer and click on the OK button to start the installation process.



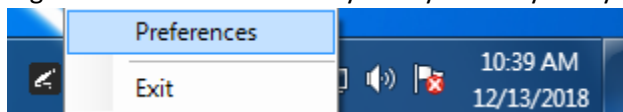
- 5) Click on the Next button to continue.



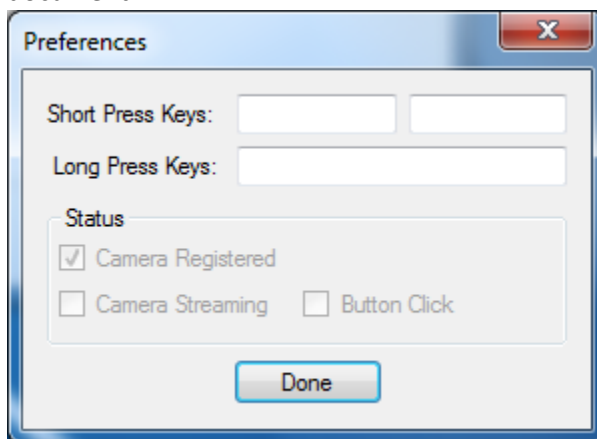
- 6) Select a reboot option (if prompted) and click on the Finish button.



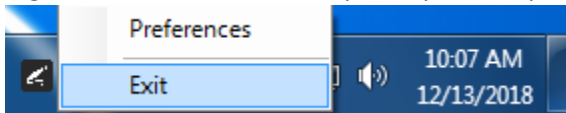
- 7) Right click on the Button Tray Utility icon in your system tray and select Preferences.



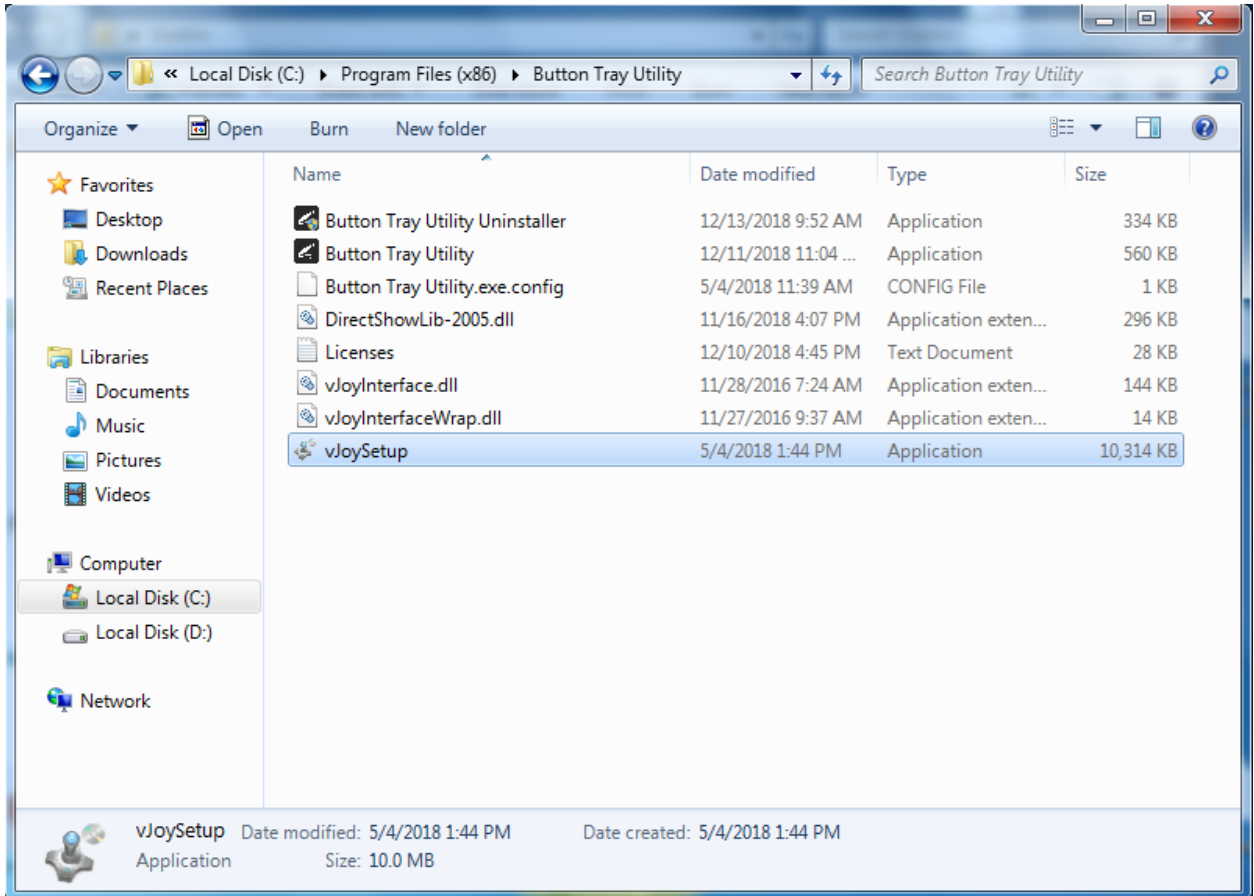
- 8) Click on the Done button, this will create an INI file we will be editing in a later step in the document.



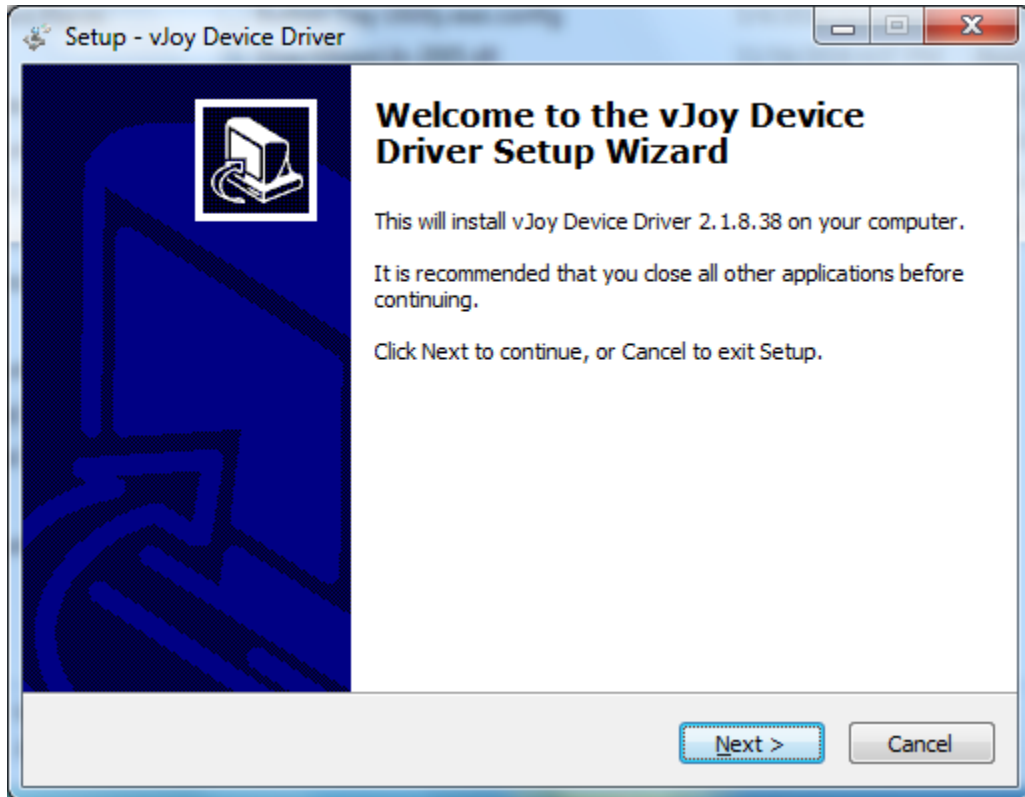
- 9) Right click on the Button Tray Utility icon in your system tray and select Exit.



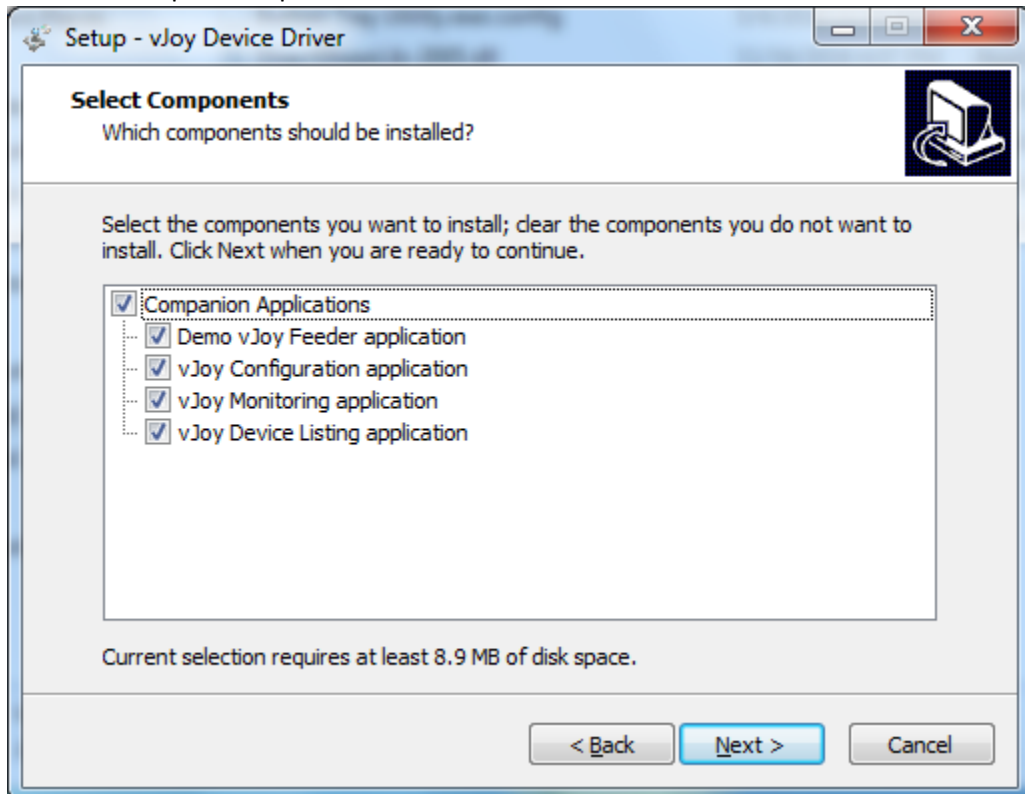
- 10) Browse to “C:\Program Files (x86)\Button Tray Utility” or “C:\Program Files\Button Tray Utility” depending upon what operating system is installed. Run the “vJoySetup” application.



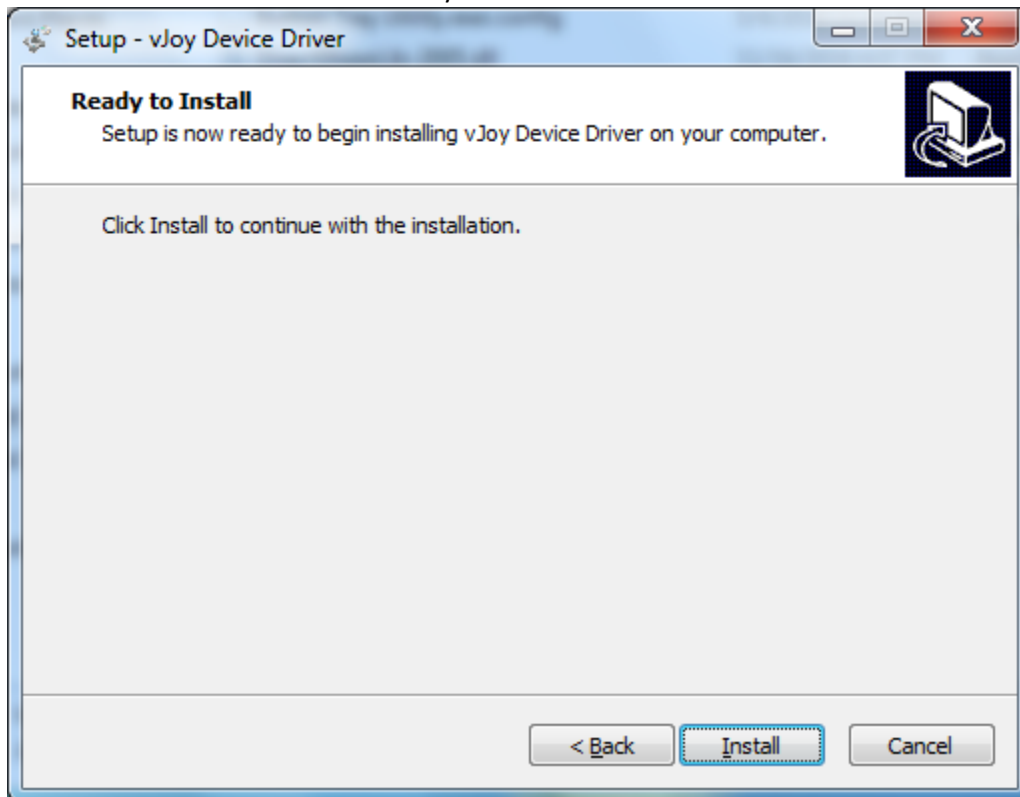
11) Select the Next button on the Welcome screen.



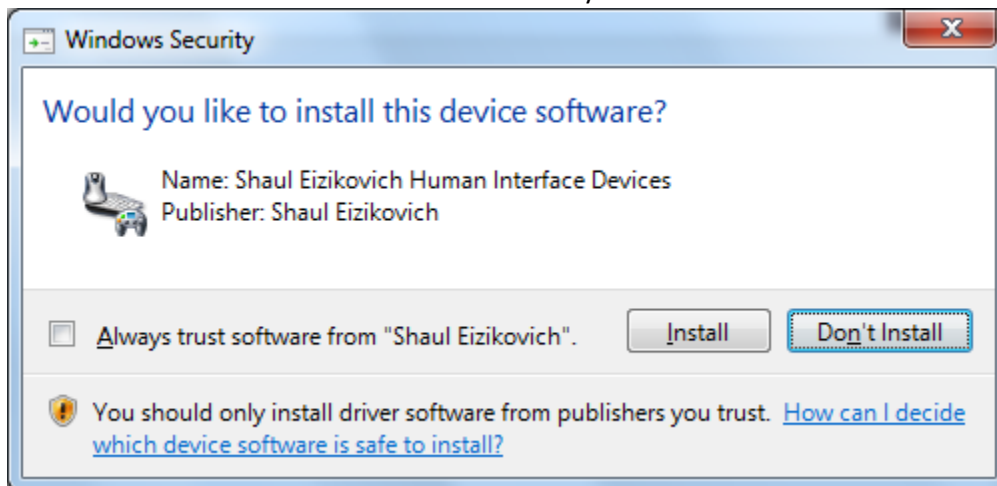
12) Select all component options and click on the Next button.



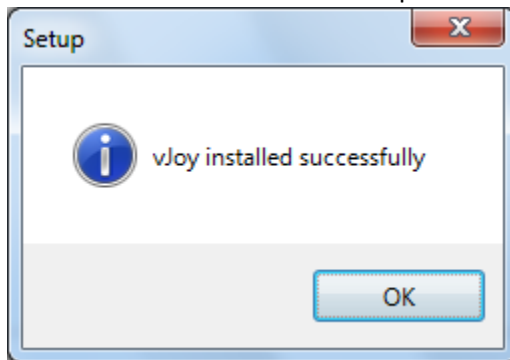
13) Select the Install button on the Ready to Install screen.



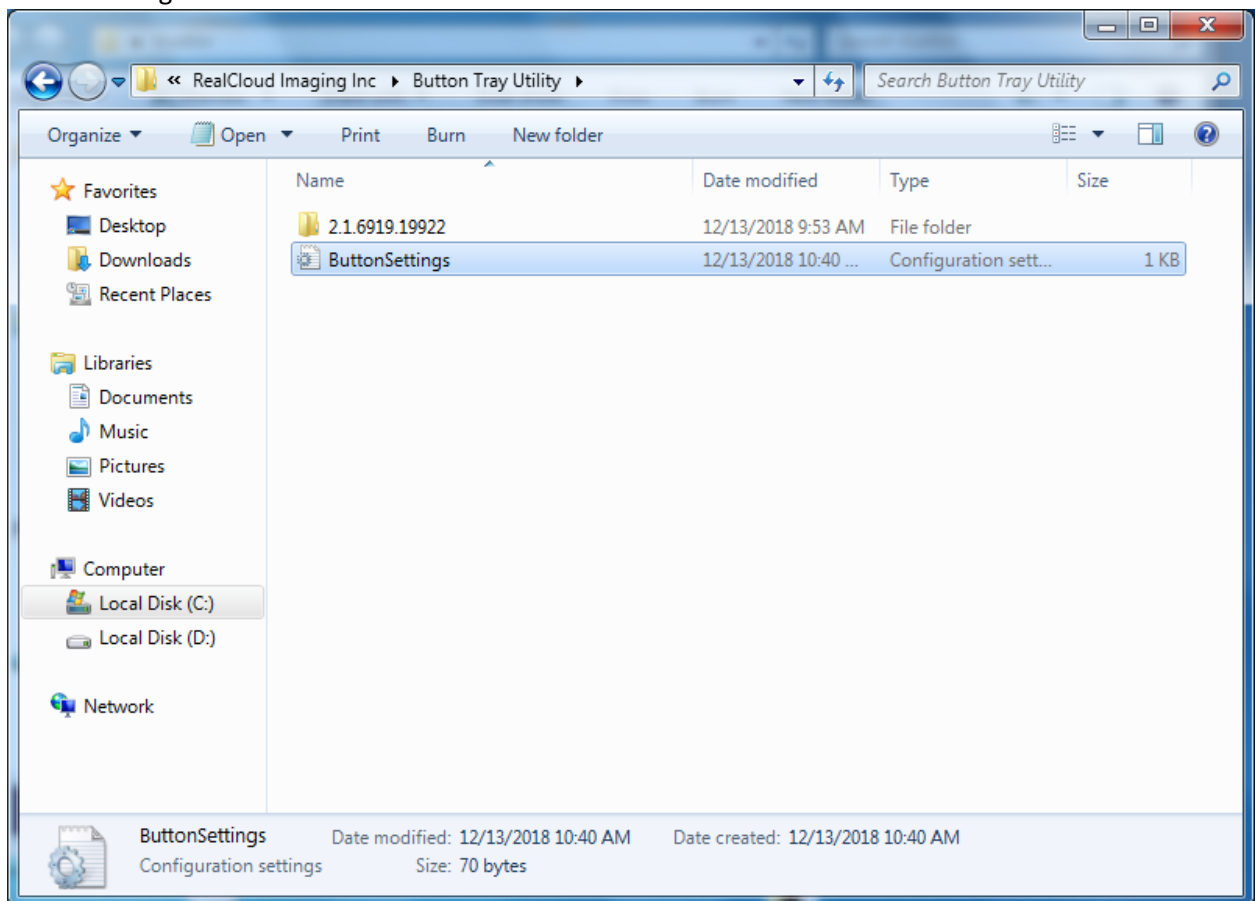
14) Select the Install button on the Windows Security screen.



15) Select the OK button on the Setup screen.



16) Browse to “C:\ProgramData\RealCloud Imaging Inc\Button Tray Utility” folder and edit the ButtonSettings.ini file.





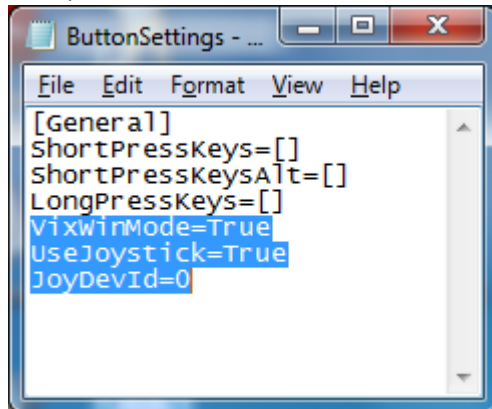
- 17) Add the three lines listed below to the ButtonSettings.ini file, then save and close the ButtonSettings.ini file.

VixWinMode=True

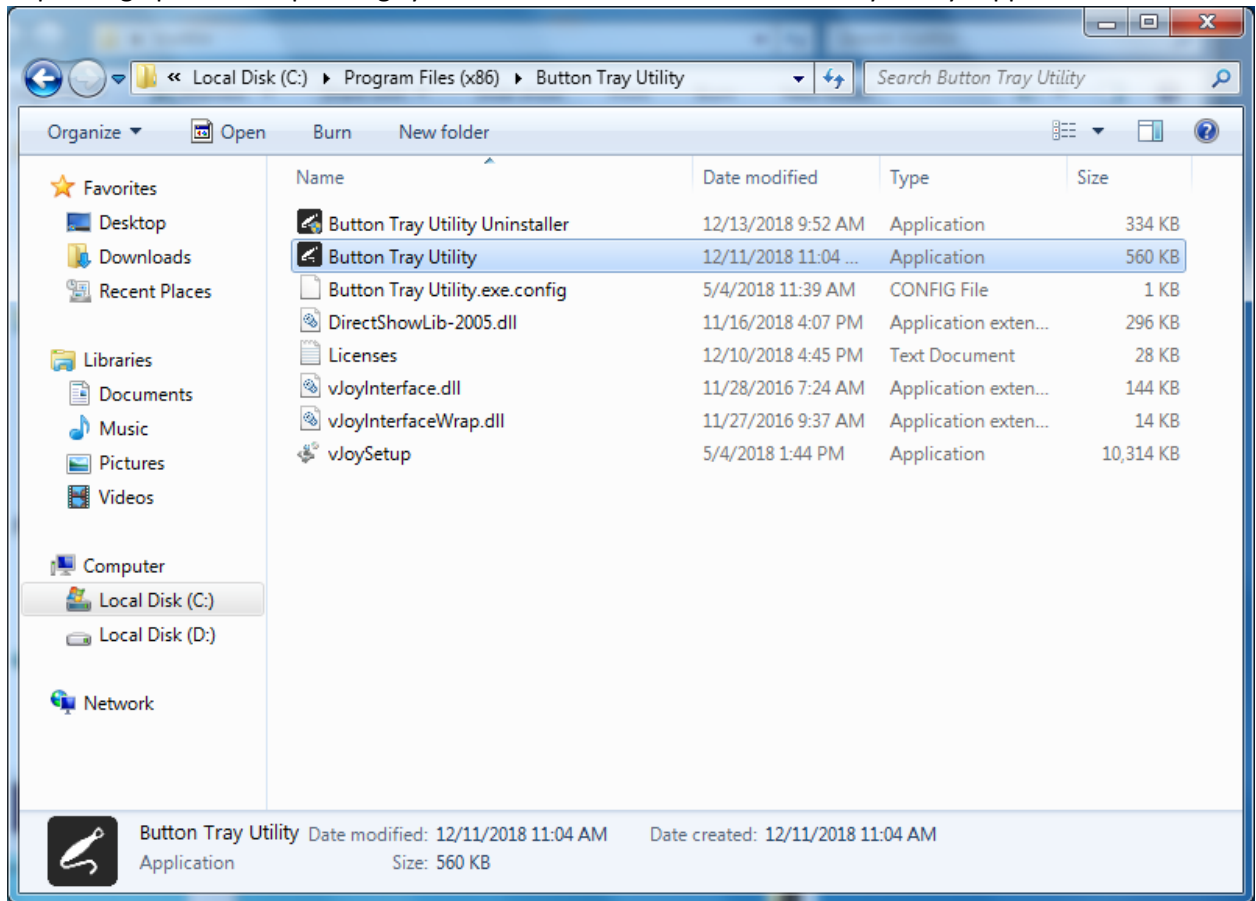
UseJoystick=True

JoyDevId=0

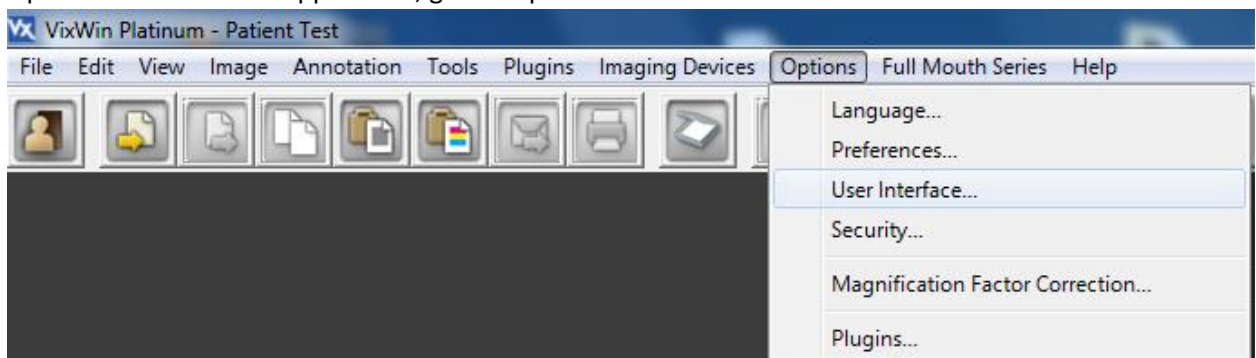
Example:



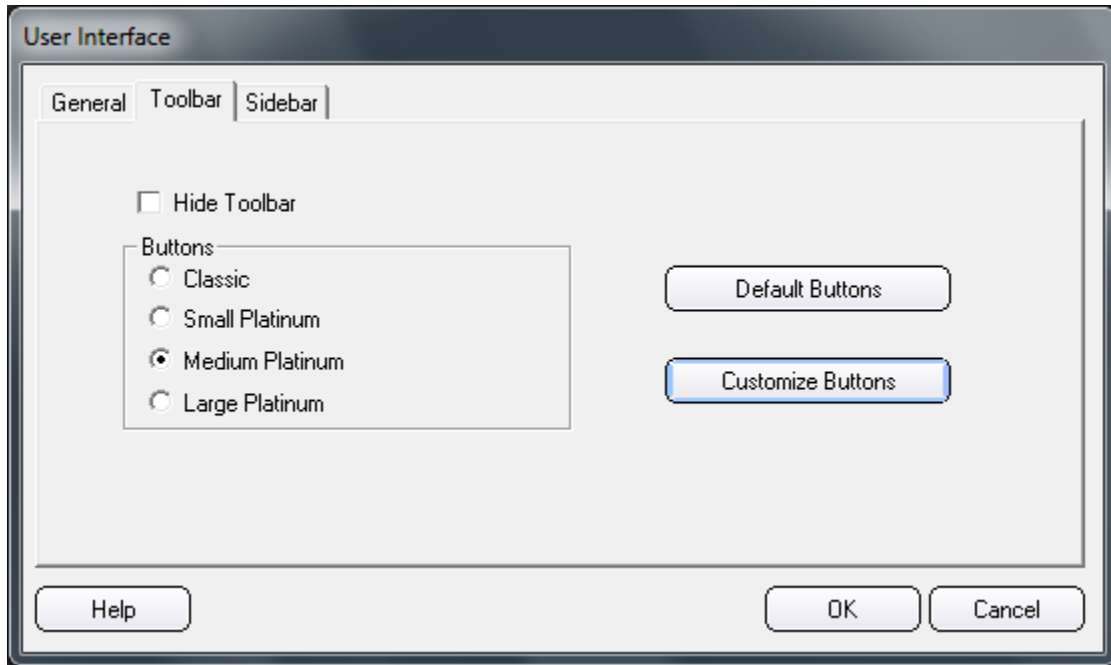
- 18) Browse to “C:\Program Files (x86)\Button Tray Utility” or “C:\Program Files\Button Tray Utility” depending upon what operating system is installed. Run the “Button Tray Utility” application.



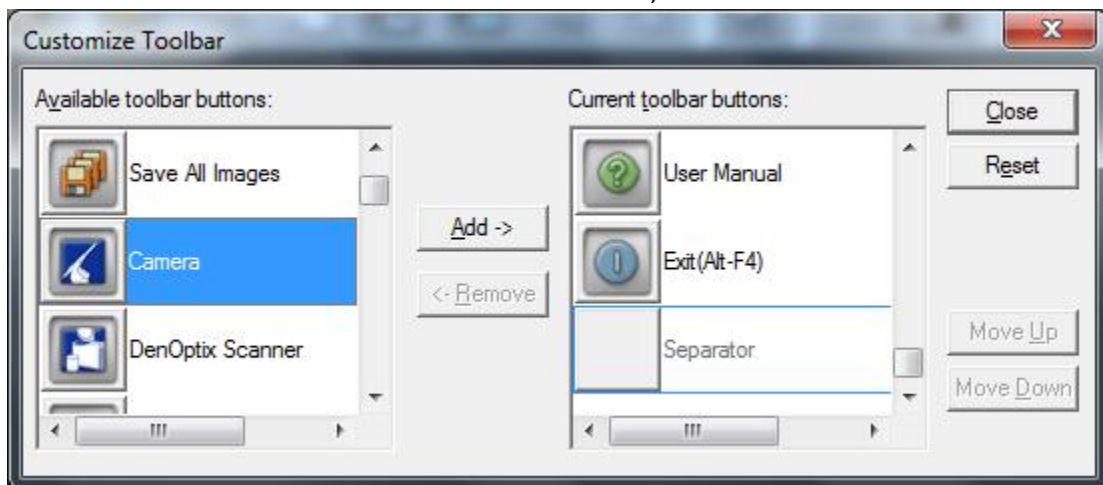
- 19) Open VixWin Platinum application, go to “Options” and select “User Interface”.



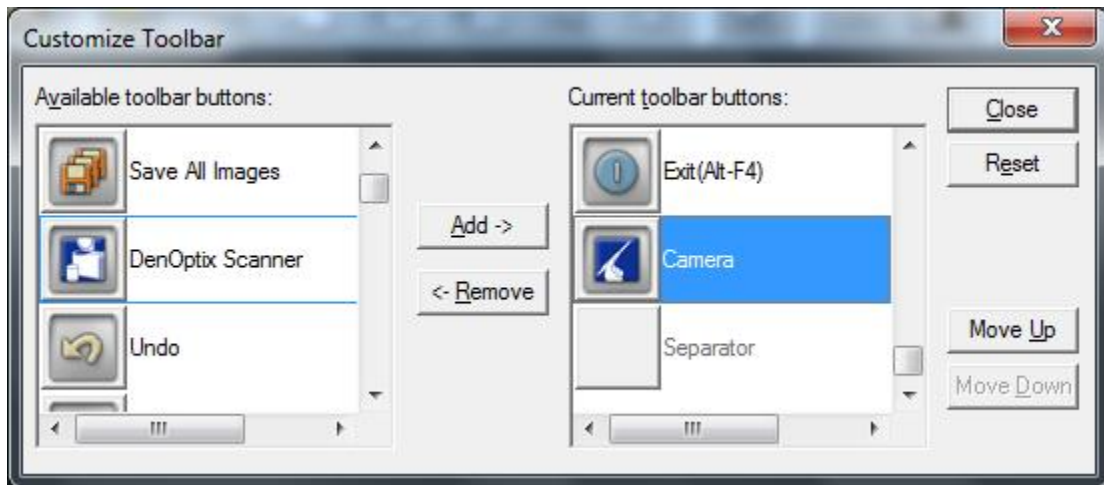
20) Select the “Customize Buttons” button.



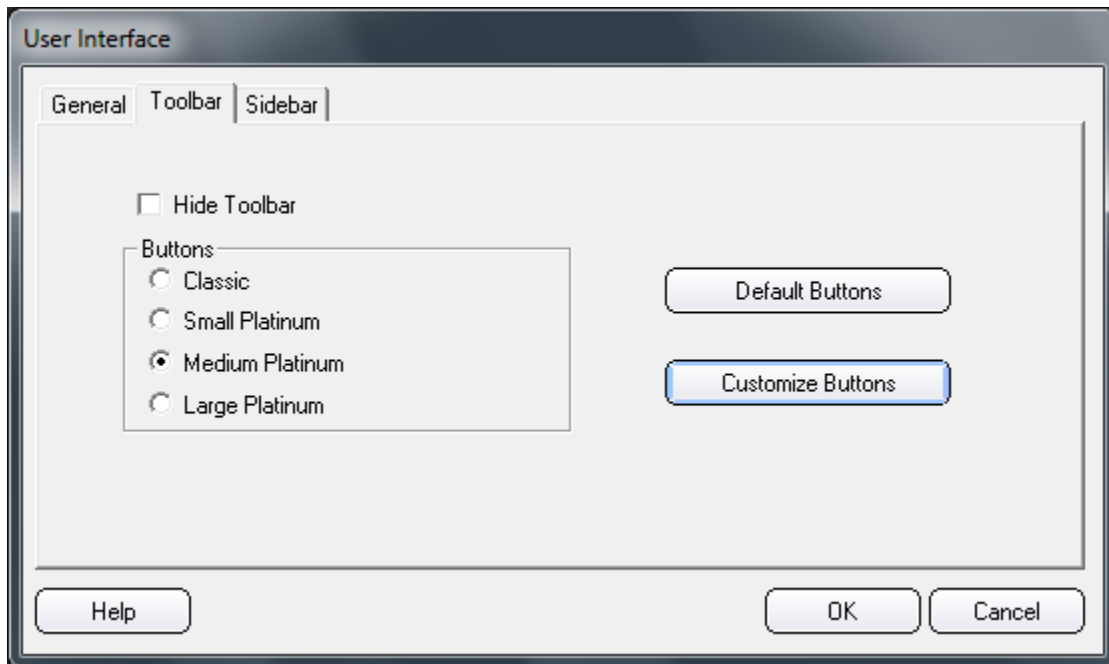
21) Select “Camera” in the “Available toolbar buttons” list, and click on the “Add” button.



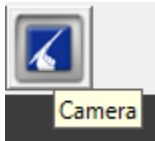
22) Select the “Close” button.



23) Select the “OK” button.



- 24) With a patient select in the VixWin application, select the camera toolbar button to begin acquiring images.



NOTE: If you receive an error message the first time you select the Camera button that says, "Launch camera from system tray", the GxPicture installation will need to be modified to remove the GxVideo module. In the Control Panel, go to Add/Remove Program, select GxPicture and select Modify. When prompted for which features to install, select only the necessary hardware – be sure to de-select "Gendex Digital Cameras".

- 25) A short/quick camera button press, and release will pause the video from the REALCLOUD HD1 camera.

When a video image is paused, a short/quick camera button press, and release will save the image and return to live video from the REALCLOUD HD1 camera.

When a video image is paused, a long camera button press, hold (2 second), and release will return to live video from the REALCLOUD HD1 camera without saving the image.