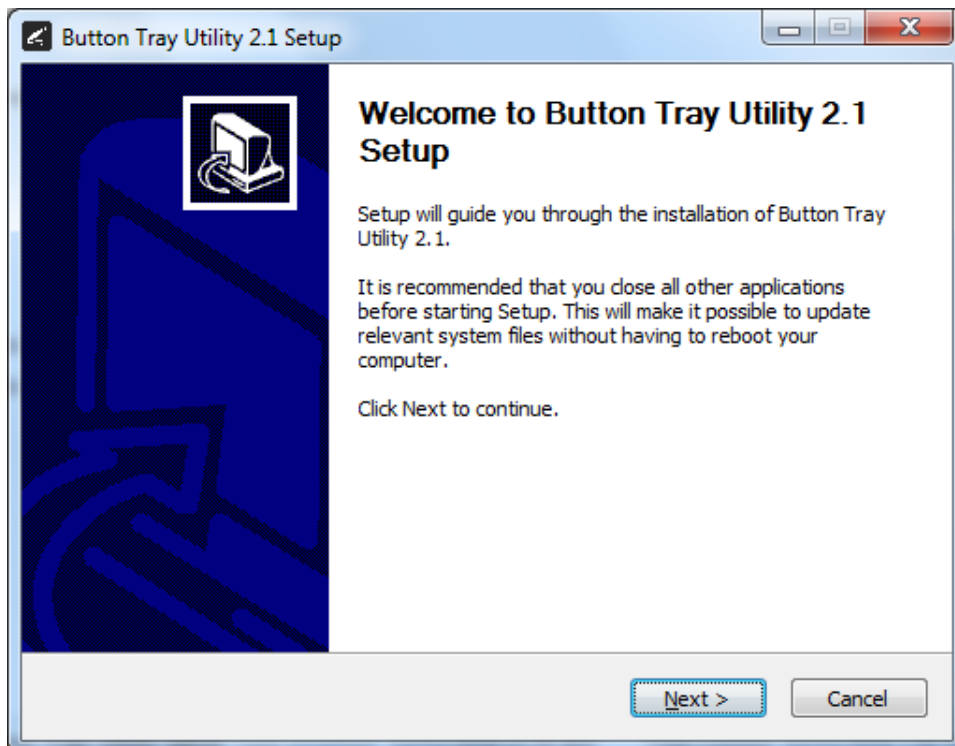
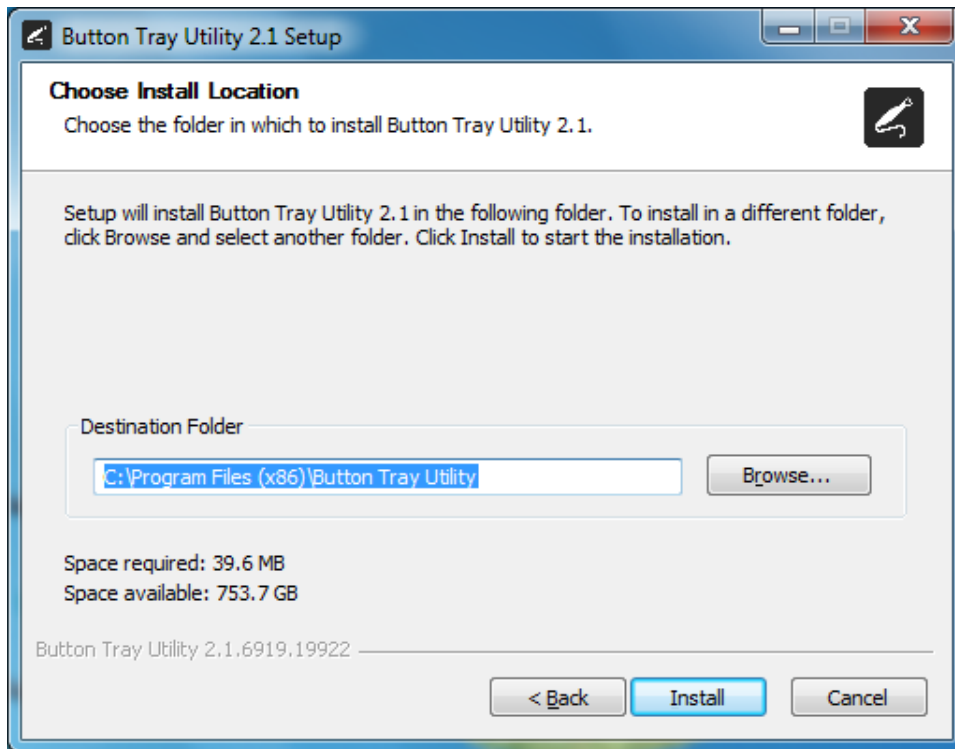


Setup Guide for Patterson Imaging/Eaglesoft 15.x and higher.

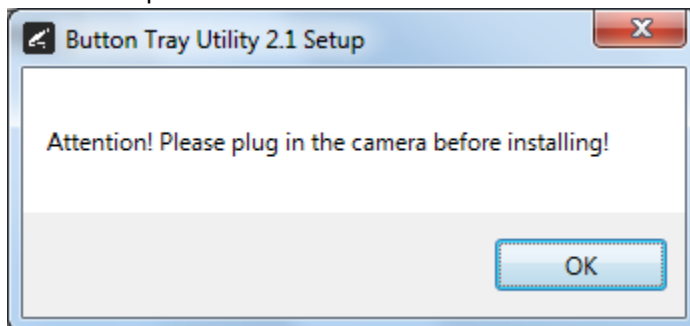
- 1) Install the REALCLOUD HD1 camera button software utility. The installer is located on the REALCLOUD HD1 flash drive in the Button Software folder. Or REALCLOUD Website <http://www.realcloudimaging.com/support/>
Scroll down the Support Page to the Downloads Section. Click the “Capture Button Software” button. This will start downloading the Button-Tray-Utility.zip , once downloaded open the zip file and Install the REALCLOUD HD1 camera button tray utility software.
- 2) Select the Next button on the Welcome screen.



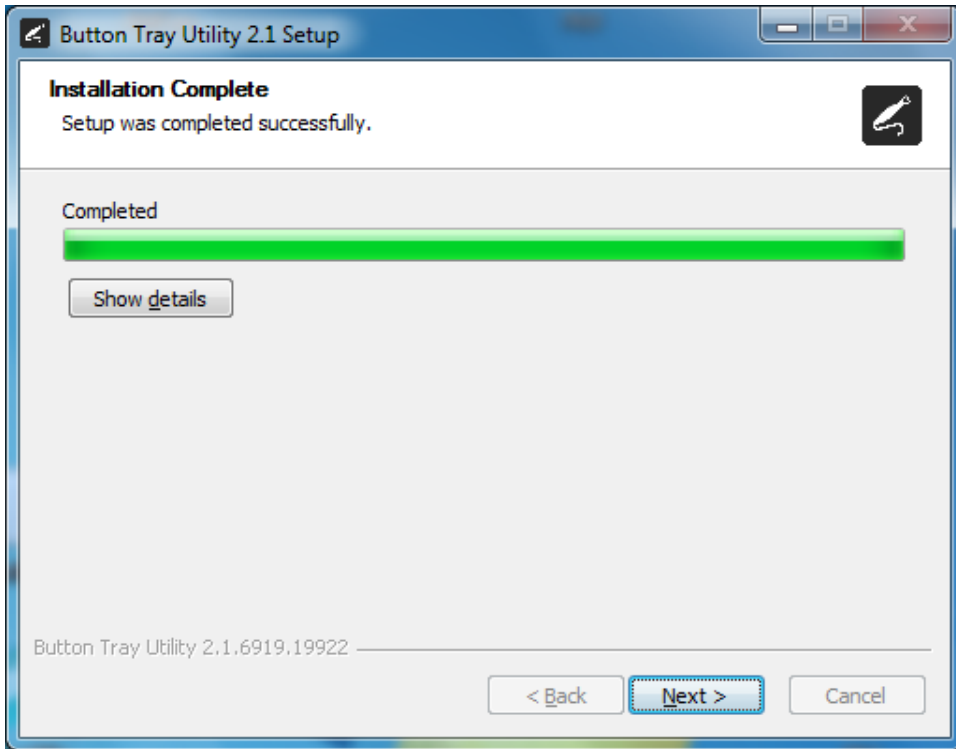
- 3) Select the install destination folder and click on the Install button.



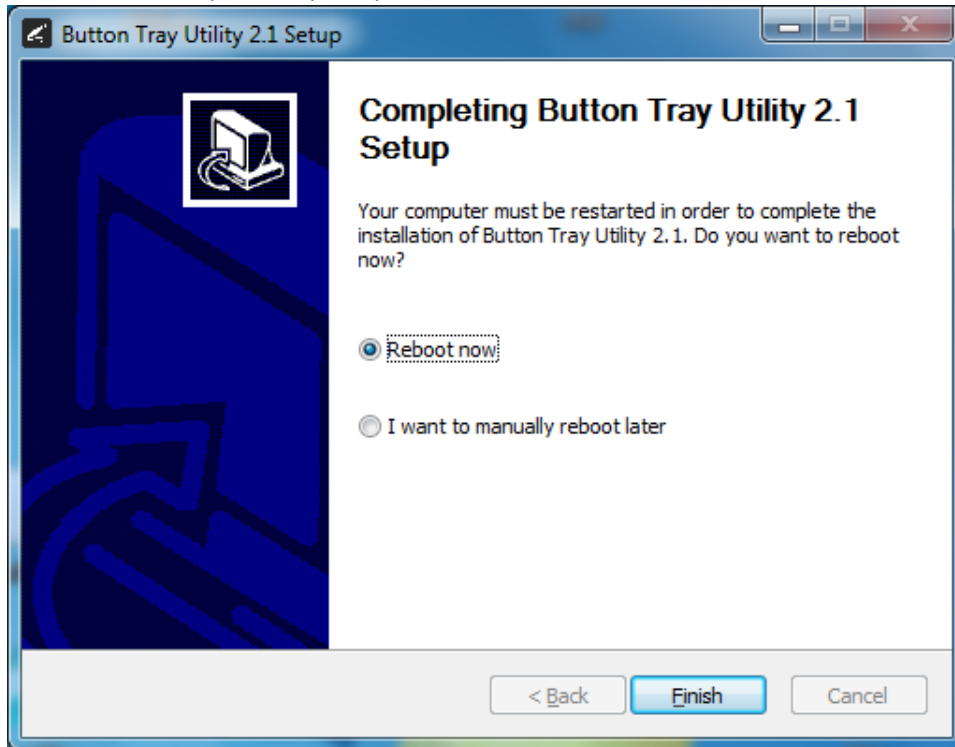
- 4) Plug the REALCLOUD HD1 camera into the computer and click on the OK button to start the installation process.



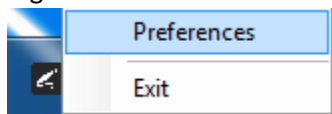
5) Click on the Next button to continue.



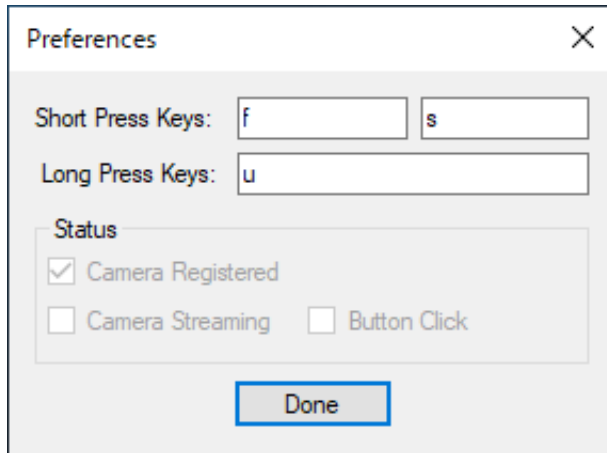
- 6) Select a reboot option (if prompted) and click on the Finish button.



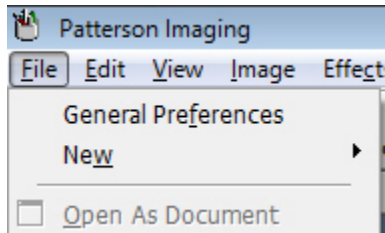
- 7) Right click on the Button Tray Utility icon in your system tray and select Preferences.



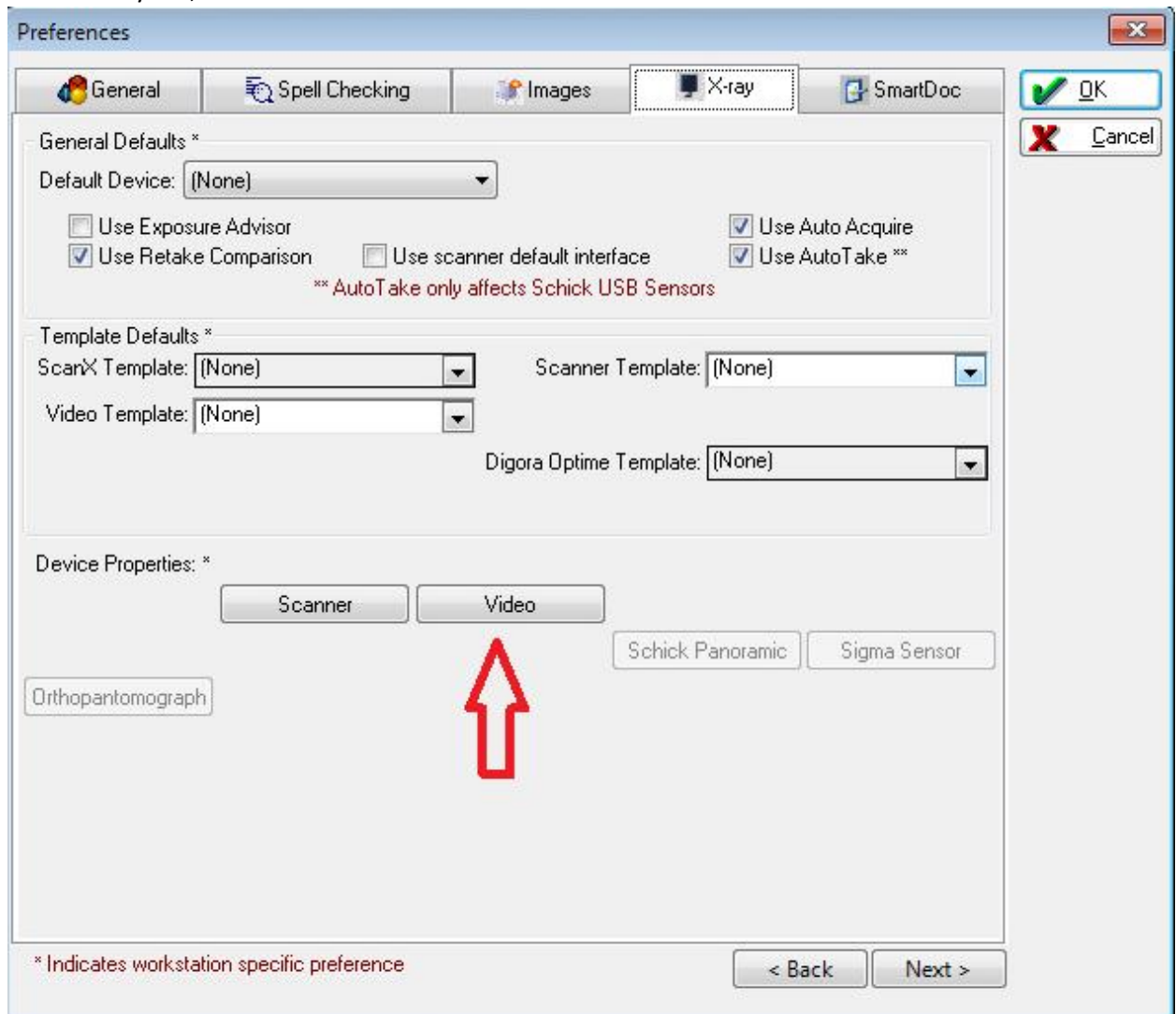
- 8) Click in the first text box for Short Press Keys and type “f” on your keyboard and in the second text box for Short Press Keys and type “s” on your keyboard.
- 9) Click in the text box for Long Press Keys and type “u” on your keyboard, then click on the Done button.



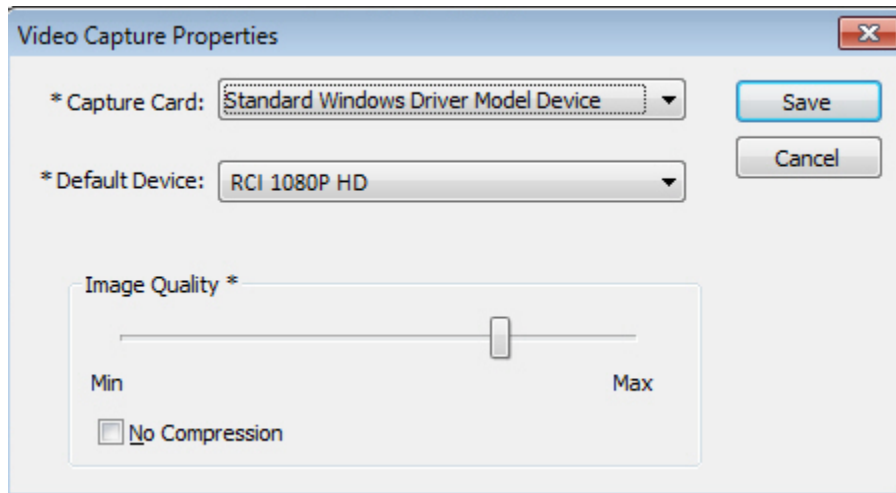
- 10) Open Patterson Imaging/Eaglesoft application, click on File and select Preferences/General Preferences.



11) On the X-ray tab, click the Video button.



- 12) Set the Capture Card option to Standard Windows Driver Model Device and set the Default Device to RCI 1080P HD. Click the Save button and close out of Preferences.



- 13) With a patient selected, open the IntraOral Video acquisition.
- 14) A short/quick camera button press, and release will pause the live video from the REALCLOUD HD1 camera. When a video image is paused, a short/quick camera button press, and release will save the image and return to the live video. When a video image is paused, a long camera button press, hold (2 second), and release will return to live video without saving the image.